

MATTHEW JAMES

Residential Sales • Lettings • Management



Grays Inn Road, Holborn, WC1X 8AZ

Asking Price £325,000

A large studio flat on the second floor of an attractive mansion block offering 398 Sq.Ft. (37 Sq.M.) of internal floor space requiring some updating. The property offers classic mansion flat features with high ceilings and sash windows (double glazed). The property is located on Grays Inn Road and is a short walk away from Chancery Lane tube station and the green open spaces of Coram's Fields and the shops and eateries within the Brunswick Centre. Offered Chain Free. Mixed Tenure Block. New 250 Year Lease.

Ground Floor Entrance Hallway



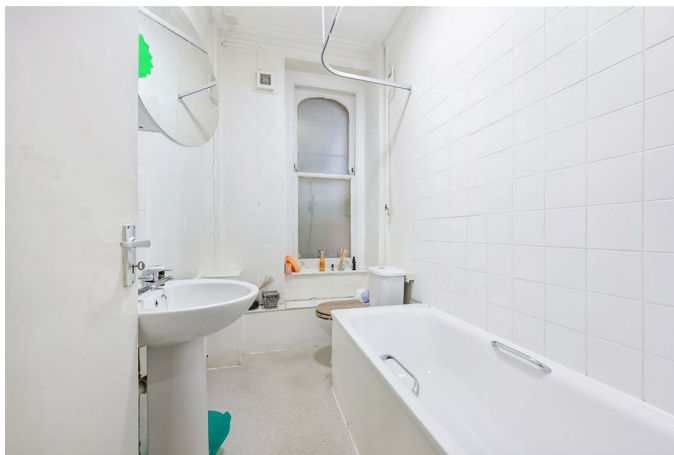
Kitchen



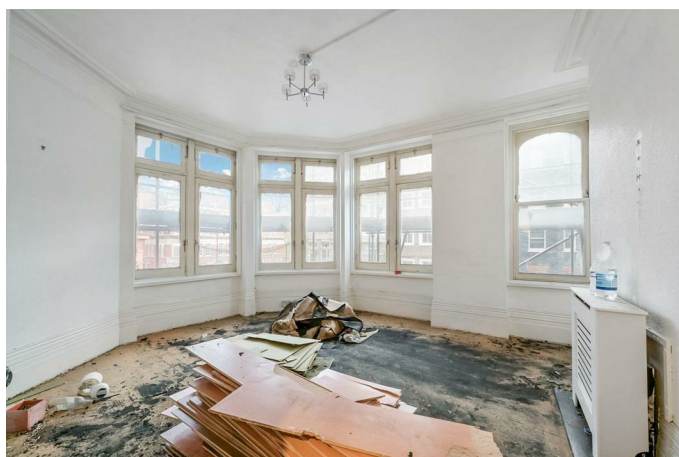
Second Floor Entrance
Hallway



Bathroom



Studio Room



Additional Information

Camden Council Tax Band C

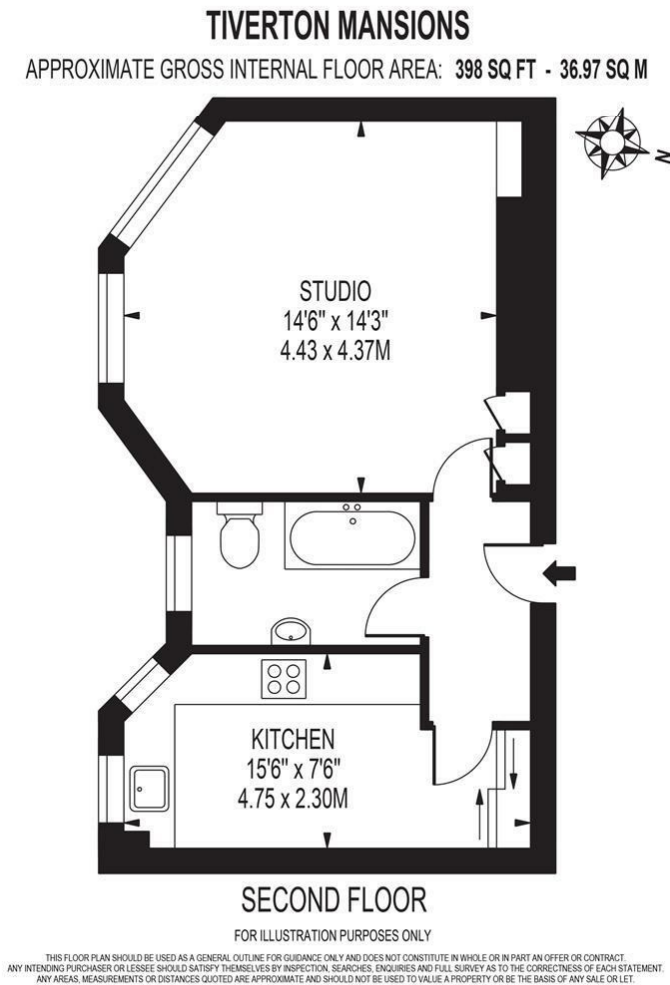
New 250 Year Lease

Ground Rent - Zero

Service Charges £1355.42 per annum

Mixed Tenure Block

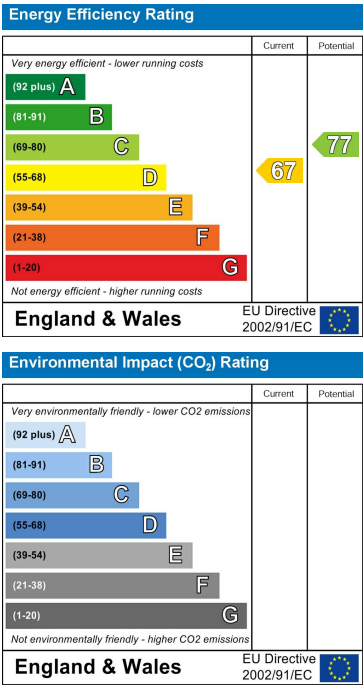
Floor Plan



Area Map



Energy Efficiency Graph



These particulars, whilst believed to be accurate are set out as a general outline only for guidance and do not constitute any part of an offer or contract. Intending purchasers should not rely on them as statements of representation of fact, but must satisfy themselves by inspection or otherwise as to their accuracy. No person in this firm's employment has the authority to make or give any representation or warranty in respect of the property.